

MONTHLY MEMBERSHIP PROGRESS REPORT

District 315A1

Results as of: 5/31/2026

GMT:

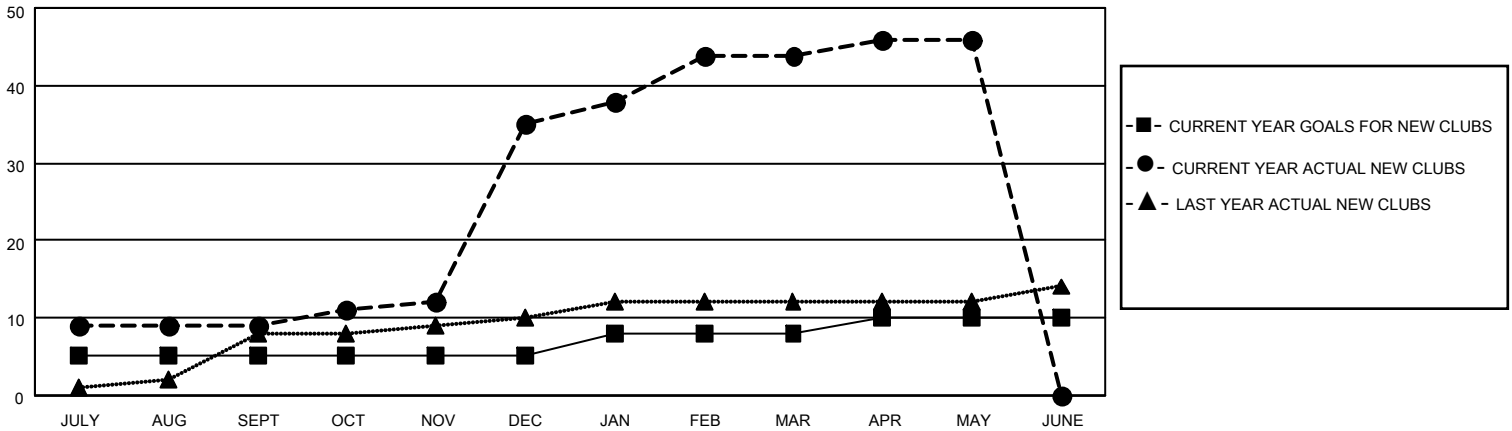
LOCATION REP OF BANGLADESH

GMT CA

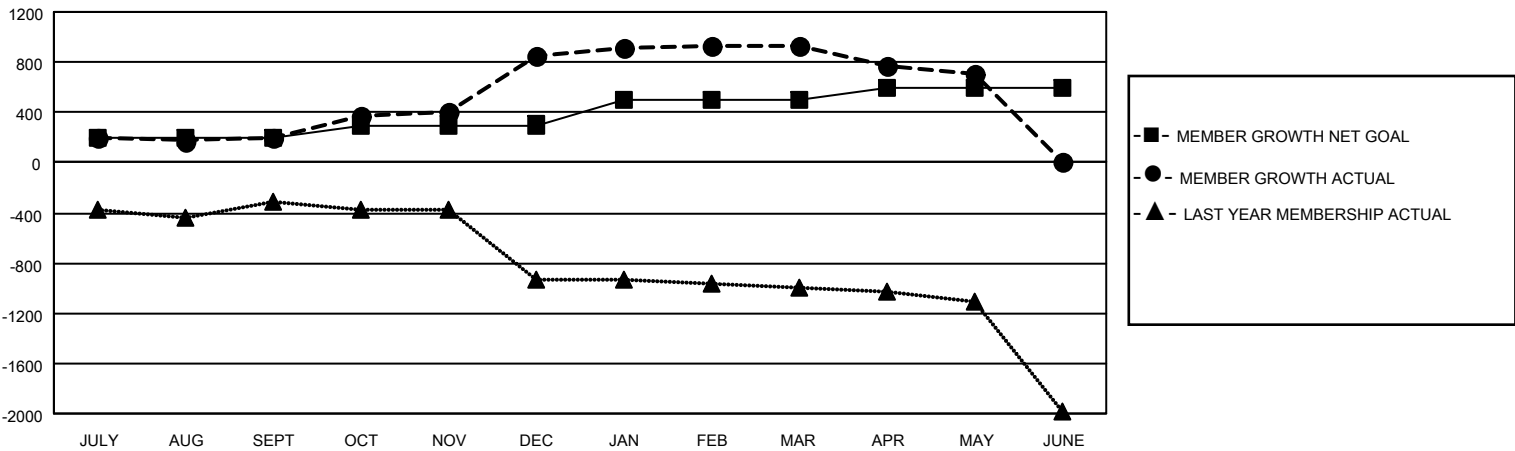
| Clubs | | | |
|-----------------------|---------------|-----------|---------------|
| RESULTS FOR 2025-2026 | | | |
| QUARTER | NEW CLUB GOAL | NEW CLUBS | DROPPED CLUBS |
| JULY/AUG/SEPT | 5 | 9 | 0 |
| OCT/NOV/DEC | 0 | 26 | 0 |
| JAN/FEB/MAR | 3 | 9 | 4 |
| APR/MAY/JUNE | 2 | 2 | 1 |

| Members | | | |
|-----------------------|------------------------|----------------------|--|
| RESULTS FOR 2025-2026 | | | |
| QUARTER | MEMBER GROWTH NET GOAL | MEMBER GROWTH ACTUAL | DROPPED MEMBERS ACTUAL (including transfers) |
| JULY/AUG/SEPT | 200 | 398 | 152 |
| OCT/NOV/DEC | 100 | 859 | 97 |
| JAN/FEB/MAR | 200 | 222 | 139 |
| APR/MAY/JUNE | 100 | 110 | 307 |

GOALS AND ACTUAL NEW CLUBS CUMULATIVE



GOALS AND ACTUAL MEMBERS CUMULATIVE



| | | |
|--|---|--|
| DROPPED CLUBS: 5 | 99 CLUBS OF 180 ADDED 1 OR MORE NEW MEMBERS | GENDER DISTRIBUTION MALE 2,544 (77.47%) FEMALE 737 (22.44%) |
| DROPPED MEMBERS DECEASED 1 CLUB CANCELLED 339 OTHER 347 TOTAL 687 | CLICK HERE FOR CUMULATIVE MEMBERSHIP DATA | TOTAL FAMILY UNIT MEMBERS 424 FAMILY MEMBERS PAYING HALF DUES 280 |